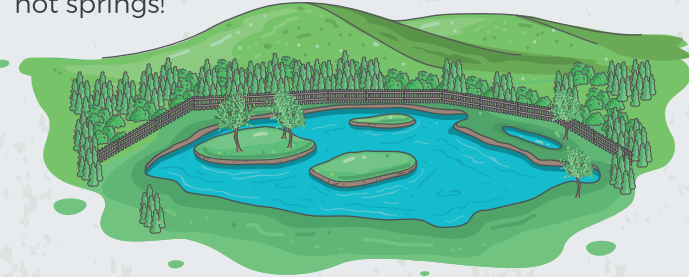


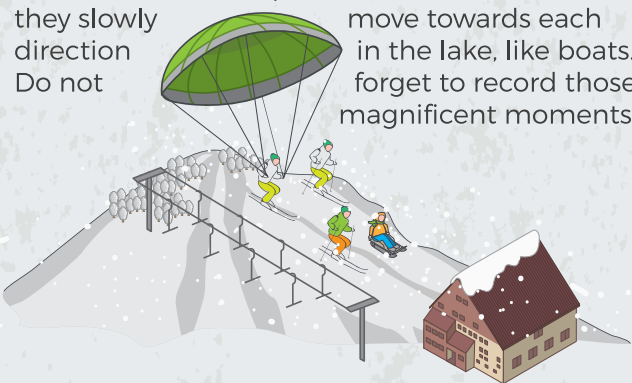
Kös Hot Springs

The thermal waters (42° C) located within the borders of Ilıcalar Town, which is available at the 20th km of Bingöl-Karlıova Highway, are used for the treatment of eczema, psoriasis, joint diseases, slipped disc, kidney stones, rheumatic diseases and gynecological diseases. There are two facilities in the town, one of which is Bingöl University while the other one belongs to the private sector and their total capacity is 170 beds in total, in addition to various pools within the body of these facilities prepared for different concepts. Do not forget to spend your night at the hot springs!



Yüzen Islands (Turnalar Lake)

Yüzen Islands (Floating Islands) are located at 45 km away from Bingöl city center, and they are 4.5 km away from Bingöl-Solhan Highway. Yüzen Islands are completely natural formations. The lake is a crater lake located on flat land, three sides of which are surrounded by mountains and hills. The lake area is more than 300 sqm. with a depth of approximately 50 meters. The water level stays the same during the winter and summer months. There are three moving islands in the middle of lake with trees. The islands are independent from each other and they slowly move towards each other in the lake, like boats. Do not forget to record those magnificent moments!



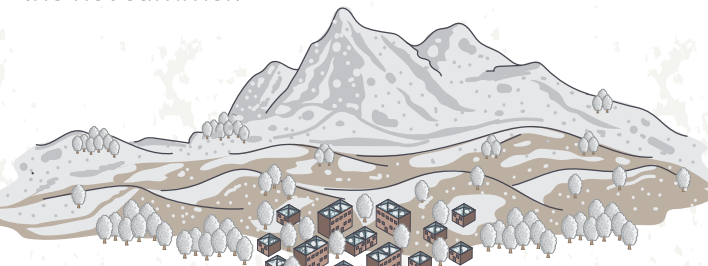
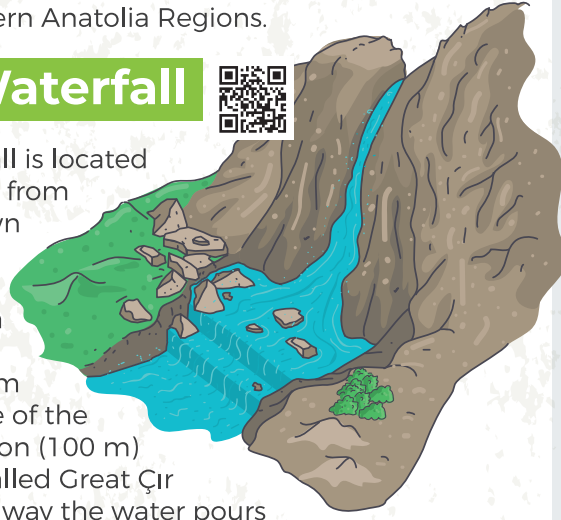
Hesarek Ski Center

Hesarek Ski Center, which is 34 km away from Bingöl city center, is located at the skirts of Hesarek Mountain (altitude: 2.283). Hesarek Ski Center Facilities have three ski tracks (ski lift track: 1800 m, chairlift track: 1600 m, baby lift track: 200 m) and the hotel building offers services with 35 rooms and 70 beds. Hesarek Ski Center, which is one of the ski centers with the longest ski season in Turkey with its ski season

lasting approximately 5 months, continues to develop with new investments to become the center of attraction of the Eastern and Southeastern Anatolia Regions.

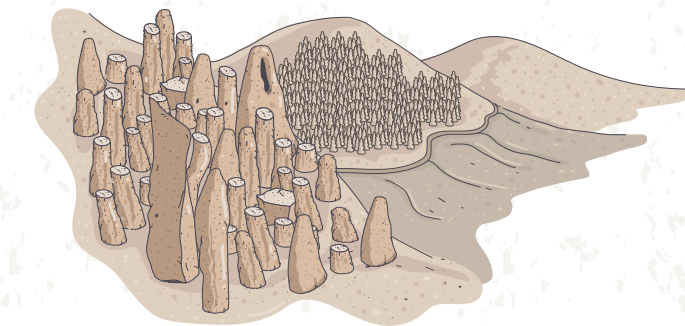
Çır Waterfall

Çır Waterfall is located 8 km away from Ilıcalar Town and the waterfall pours from 50 m of height, from the middle of the rocky section (100 m) which is called Great Çır Stone. The way the water pours amazes the watching people, as it reminds of dancing. The waterfall and the surrounding area is full of great sceneries. You can have a picnic here sitting next to the cool waters or go for trekking. Of course, do not forget to take as many scenery photos as you can. Do not forget to drink the cool water from the waterfall to refresh yourself during the hot summer!



Sülbüs Mountain

Sülbüs Mountain is located at the northwest part of Yayladere District. The mountain is a popular location for mountain climbers. While the top section of the mountain is flat, it looks like a pointed cone from away. There is always snow at its top section until the middle of July months. A festival that lasts for 3 days is organized in summer. There is a place at its top, which is surrounded by stones and visited by the local people, who sometimes bring sacrifice animals to 2900 meters of height, in addition to lighting candles and praying.

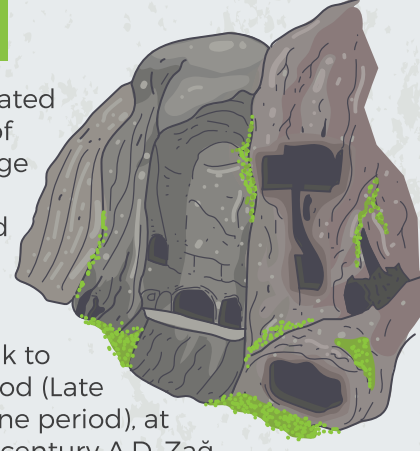


Buban Chimneys

Buban Chimneys, which are located at Oğuldere village of Sancak town that is 50 km away from the city center, draw the attention with their mystery. It is known that they date back to very old times but there is no complete information about their formation. It is thought that the flood waters coming from the valley slopes and the wind corroded the tuff formation and these interesting rock shapes with pointy ends emerged as a result. Do not forget to take your camera with you!

Zağ Caves

Zağ Cave is located in the vicinity of Kuşburnu Village along Gökçeli-Kuşburnu village road that branches from the 18th km of Bingöl-Solhan-Muş Highway. It dates back to Early Christianity period (Late Roman-Early Byzantine period), at the beginning of 5th century A.D. Zağ Caves were used as the secret settlement, living and worship area of societies with Christian faith, who were oppressed by the Roman Empire during those dates. After passing through the first cave/chamber at the bottom floor, various passages and stairs lead to the uppermost floor. In this state, Zağ Caves have five floors including the ground floor. There are cubic holes carved within the main rock base in some rooms and these holes with coated surfaces were used as storage for grain and liquids (oil, drinks, etc.). It is a cave with unique beauty that will amaze you and make you feel the need to take many photos.

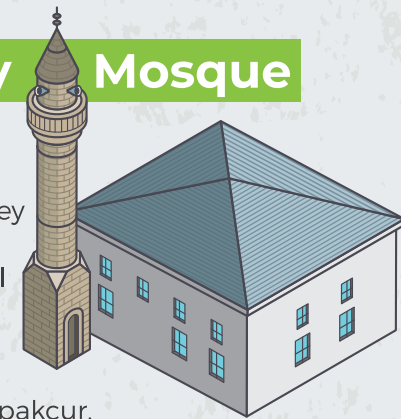


Sunrise at Kala Hill

The sunrise can only be fully observed from two locations of the earth: From the Alps of Switzerland and Kala Hill of Bingöl Mountains. You can watch the sunrise from Kala Hill of Bingöl Mountains (3250 m) within the borders of Bingöl Karlıova district, in a very unique way you have never seen before. The days between July 15 - August 15 of each year are the best times to watch. The sunrise at Kala Hill creates quite interesting sceneries that are different than the normal sunrise we know. The transportation from Bingöl is possible by vehicle up to the skirts of the mountain, followed by 25-30 minutes of walking. You will feel excited more than ever before, when you watch the sunrise!

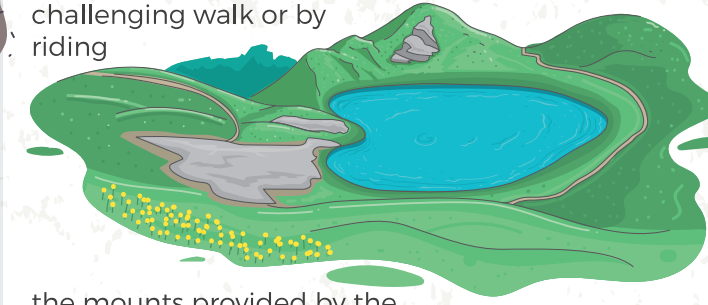
İsfahan Bey Mosque

Although it was damaged many times, İsfahan Bey Mosque, which is the oldest known historical building at Bingöl city center, continues to resist the time. It was built by the Emir of Çapakçur, İsfahan Bey, in the Abtor (Ab-ı Tahur) region in the early 16th century, with architecture from Aq Qoyunlu and cut stones. The mosque, which bears the marks of history, still preserves its magnificence.



Gerindal Lake

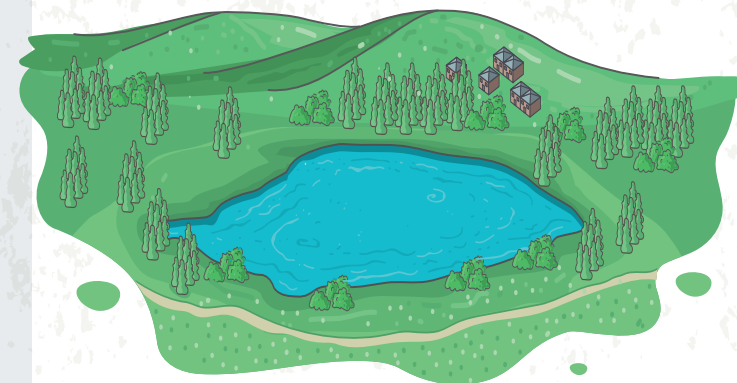
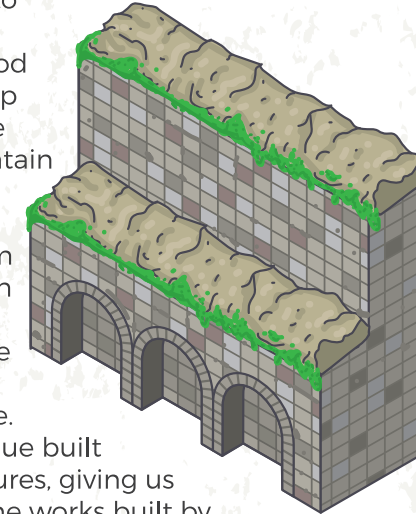
Gerindal Lake, which is located at the peak of Yayla (Plateau) Mountain (altitude: 2300) which is named after approximately 20 plateaus surrounding the lake, has been the common meeting area for the local people during the summer months, since long years. After a challenging walk or by riding



the mounts provided by the villagers, it becomes possible to reach the camping area where the snow does not melt until August, where there are large and small waterfalls as well as the Kartal Hill where the sunrise can be observed with joy, and the lake that is shaped like heart. You must absolutely visit the lake that has a rare beauty and where the nature lovers can spend their time with joy and go trekking peacefully!

Adaklı Historical Fountain

It is thought to belong to Aq Qoyunlu period because of the sheep embossment on the historical stone fountain with three sections. The water of the fountain comes from under the temple on the upper side. You can see a man figure that rides a horse at the temple entrance. There is also a mosque built next to these structures, giving us the chance to see the works built by three different cultures at the same time.



Sülüklü Lake (Tarbasan Lake)

Sülüklü Lake, located in Sarçiçek village of Bingöl center, used to contain many leeches, but it is known that this number is decreasing nowadays. It is especially frequently visited by people looking for leeches. Sülüklü Lake is a source of healing for people with inflamed or uninflamed rheumatism, psoriasis, eczema etc. skin diseases. We would like to see you as our guest not only for healing, but also for touring its natural beauties!



Murat River

As the biggest branch of Euphrates River, the Murat River passes through the Genç district center that is 20 km away from Bingöl Merkez. Murat River is fed and made bigger by Şirvan Creek and various other branches in addition to Göynük, Peri, Munzur waters and becomes as wide as a hundred meters at some points. It is united with Karasu to constitute Euphrates River. There have been many significant developments at Murat River in terms of rafting and canoeing sports. You should absolutely visit it especially for rafting and canoeing sports that draw the attention of young people.



Peri Valley

The waters coming from Karagöl and Bingöl Mountains unite with Kelhaç Creek of Karlıova district to constitute Peri Waters that flow towards the southeast direction through Çomak Mountain of Kiğı district and Fas Creek. After joining with Kalman River and Çomak Waters at the south, it leaves the borders of Bingöl province. Peri Waters unite with Munzur Waters within the borders of Tunceli province and mixes with Euphrates in the vicinity of Yeşil Creek of Elaziğ. Peri Valley is waiting for you with its magnificent view, ice-cold water and unique nature.



Kerek Creek

Kerek Creek is located 72 km away from Bingöl Merkez. It has the most important leisure time and picnic area of Kiğı district. It is a natural asset with its natural beauties. Its picnic area is surrounded by oak, juniper, wild poplar and willow trees. Kerek Creek, which is used as a picnic area by the visitors from the district and provincial center, awaits for those who want to rest and do picnic among its natural beauties.